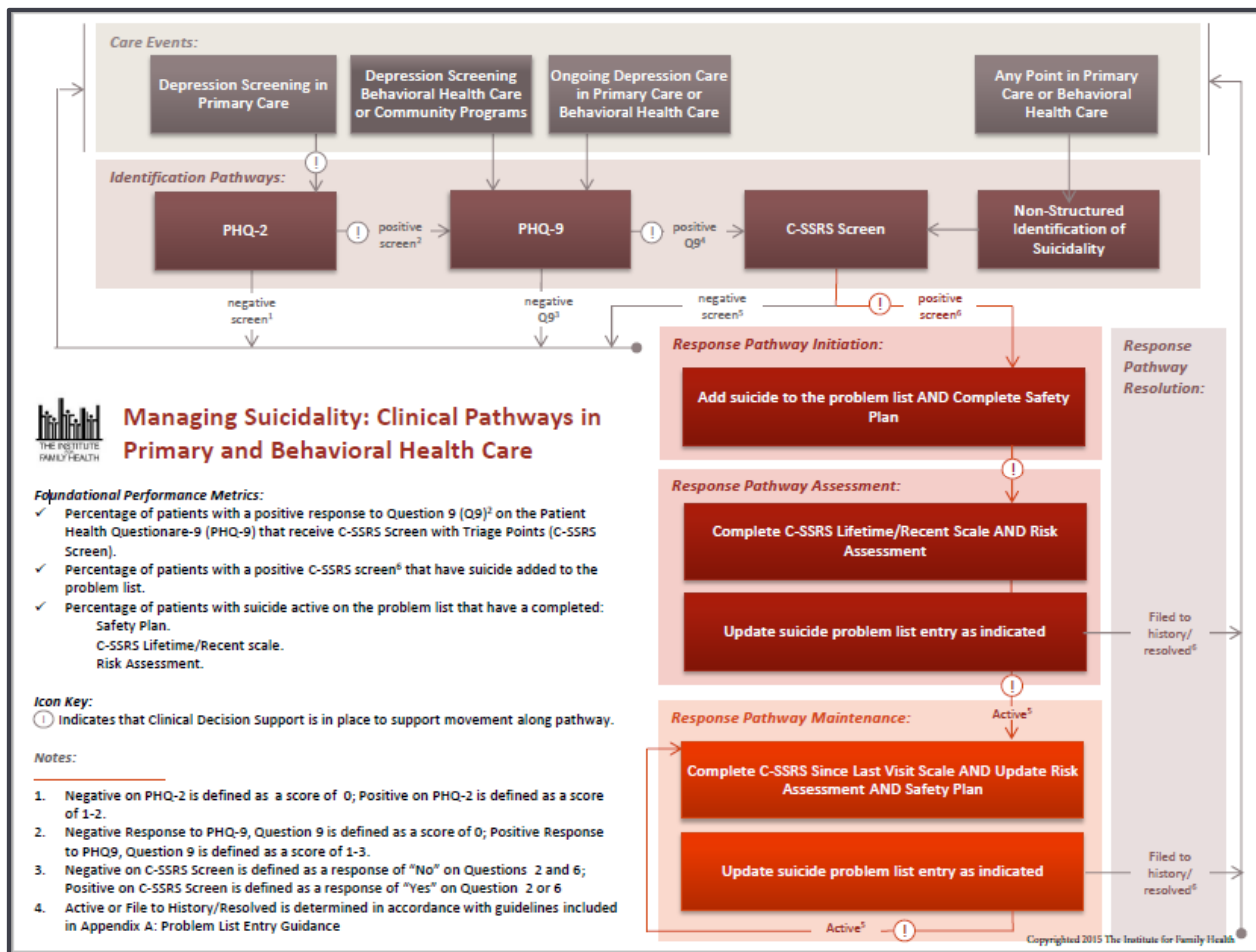
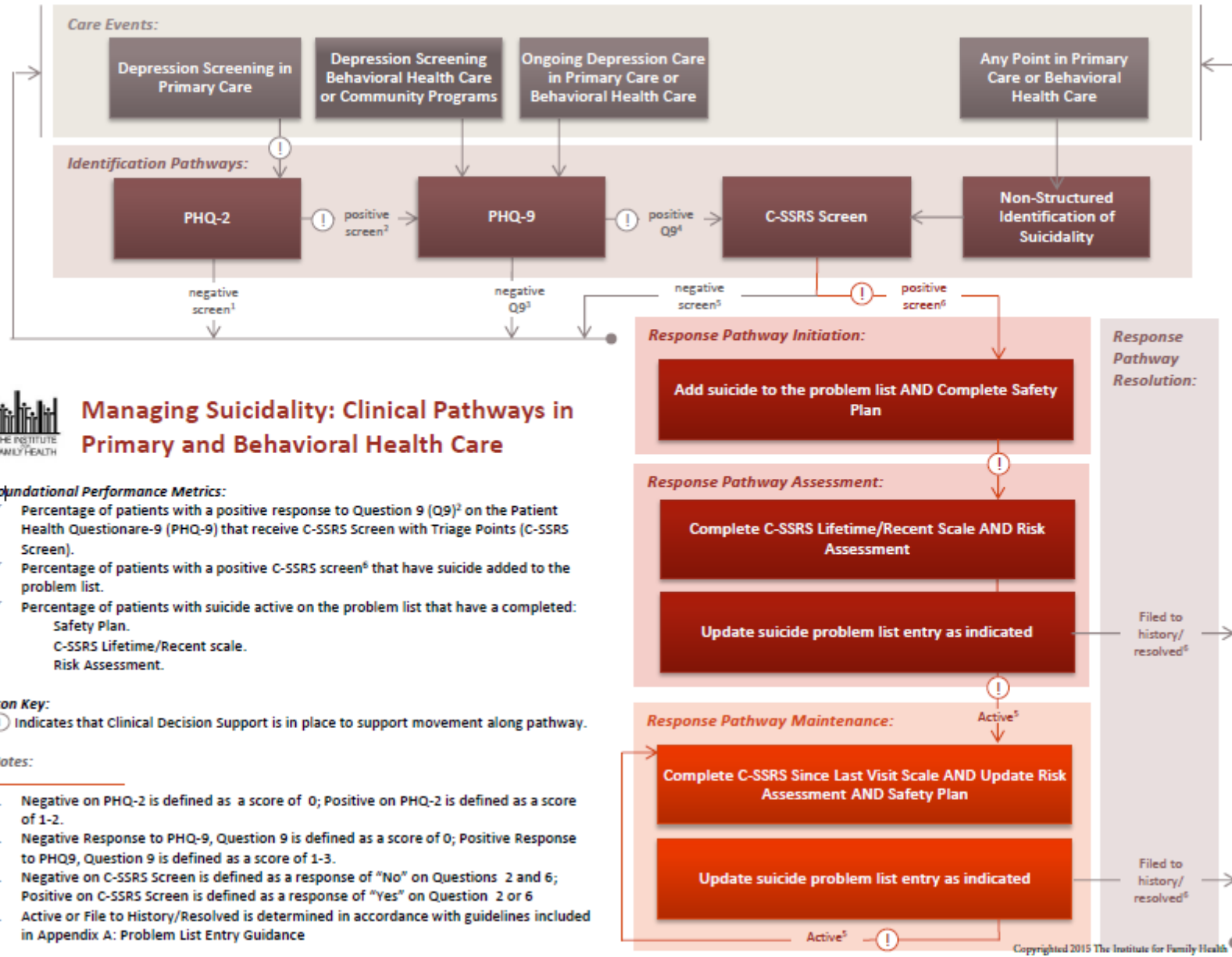


## Institute for Family Health Clinical Pathways for Managing Suicidality

The Institute for Family Health created a Managing Suicidality: Clinical Pathways in Primary and Behavioral Health Care resource to guide staff through their organization's approach to identification and response.





## Managing Suicidality: Clinical Pathways in Primary and Behavioral Health Care

### Foundational Performance Metrics:

- ✓ Percentage of patients with a positive response to Question 9 (Q9)<sup>2</sup> on the Patient Health Questionnaire-9 (PHQ-9) that receive C-SSRS Screen with Triage Points (C-SSRS Screen).
- ✓ Percentage of patients with a positive C-SSRS screen<sup>6</sup> that have suicide added to the problem list.
- ✓ Percentage of patients with suicide active on the problem list that have a completed: Safety Plan. C-SSRS Lifetime/Recent scale. Risk Assessment.

### Icon Key:

- ① Indicates that Clinical Decision Support is in place to support movement along pathway.

### Notes:

1. Negative on PHQ-2 is defined as a score of 0; Positive on PHQ-2 is defined as a score of 1-2.
2. Negative Response to PHQ-9, Question 9 is defined as a score of 0; Positive Response to PHQ9, Question 9 is defined as a score of 1-3.
3. Negative on C-SSRS Screen is defined as a response of "No" on Questions 2 and 6; Positive on C-SSRS Screen is defined as a response of "Yes" on Question 2 or 6
4. Active or File to History/Resolved is determined in accordance with guidelines included in Appendix A: Problem List Entry Guidance

Copyrighted 2015 The Institute for Family Health